

***100 CLUB***

---

**VENUE ONE SHEET**

---

# HISTORY

## HISTORY // FUTURE

London's iconic 100 Club has been trading under the same name since 1964 and from 1942 as the Feldman Jazz Club before then, earning it the title of the oldest independent venue world wide.

Throughout the decades the venue has championed all manors of ground breaking scenes including the blues of Muddy Waters and BB King as well as mod stylings of The Who and The Kinks in the 60s; the birth of punk with the Sex Pistols, The Clash and Siouxsie & The Banshees plus regular reggae sessions from Eddie Grant and The Mighty Diamonds in the 70s; the first ever Northern Soul All Nighter in the 80s; the indie explosion with early shows from Oasis and Suede in the 90s as well as key shows for artists such as The Horrors, Gallows and Kings Of Leon in the 00s.

Because of the club's rich history, it has become an institution for intimate secret shows by major acts including Queens Of The Stone Age, Metallica, Alice Cooper, The Rolling Stones, Blur, Paul McCartney, Nas, Santigold, Black Rebel Motorcycle Club, Toots And The Maytals, Plan B, Paul Weller and Spiritualized to name just a few.

Despite its historic reputation the venue still continues to showcase some of the most exciting new music in London with recent shows from artists such as Wet Leg, Fat Dog, Warmduscher, The Mysterines, Avelino, CASISDEAD and Opus Kink across it's in-house programming and hosting of other series.

[the100club.co.uk](http://the100club.co.uk)

[facebook.com/the100club](https://facebook.com/the100club)

[instagram.com/100clublondon](https://instagram.com/100clublondon)

## LOCATION // CONTACTS

### VENUE ADDRESS

100 CLUB  
100 Oxford Street London  
W1D 1LL

### LOADING ADDRESS

Berners Place  
W1T 3AE  
3.2m height restriction



### LOADING INFO

- The venue loading entrance is located at the end of Berners PI via the black doors
- Parking is not permitted before 6.30pm Mon – Sat
- Please LOAD & GO, you can return and park after 6.30pm
- We are a basement venue with three flights of fire escape stairs to enter
- Please supply own crew if required
- Berners PI is a residential mews, please respect our neighbours and load quietly
- Paid parking available in surrounding areas

#### NEAREST CAR PARKS:

- Q-Park: Soho, 51 Poland Street, London, W1F 7NQ
- NCP: 32 Brewer St, London W1F 0LA

### CONTACTS

#### Venue Manager

[ruby@the100club.co.uk](mailto:ruby@the100club.co.uk)

#### Venue Hire

[ruby@the100club.co.uk](mailto:ruby@the100club.co.uk) /  
[matt@the100club.co.uk](mailto:matt@the100club.co.uk)

#### House Promotions

[matt@the100club.co.uk](mailto:matt@the100club.co.uk)

#### Head Engineer: Tony

[bambony@hotmail.com](mailto:bambony@hotmail.com)

#### Bar Manager

[stoyan@the100club.co.uk](mailto:stoyan@the100club.co.uk)

# VENUE INFO

## CAPACITY

320 standing / 170 seated in rows / 70 seated cabaret style +120 standing

## AGE RESTRICTIONS

The 100 Club is strictly 18+

## CURFEW

Sun - Thurs: 11pm

Fri - Sat: 3am - 11pm *live curfew*

## ADVISED RUNNING TIMES

**Load in:** 3pm

**Sound check:** 5pm

**Doors:** 7.30pm

**Opener:** 8.00pm - 8.30pm

**Main support:** 8.45pm - 9.30pm

**Headliner:** 9.45pm - 11pm

**Live curfew:** 11pm

## EVENT HIRE

PLEASE REQUEST A RATE CARD

**Hire includes:** Sound engineer /

x3 Security / PA & Lights & Bar Staff

**Not included:** Box Office Cashier / Rider / Backline / Towels

## DEPOSIT

We require a 50% deposit to confirm your booking. Deposit is non refundable upon cancellation unless 12 weeks notice given

## DRESSING ROOM

Dressing room with toilet, chairs, table and kettle available. Please provide your own AAA passes. Smoking is strictly prohibited in the dressing room and throughout venue

## RIDER

A crate of 24 bottle beers is available to purchase from the venue manager at a discounted rate of £27. A case of 24 bottles of water is available at £13

## CATERING

The 100 Club does not have kitchen facilities. You are welcome to bring off site food to the venue to consume during sound check providing it is cleared away after eating

## SHOWERS

There are no showers on site

## MERCHANDISE

You are welcome to set up merchandise using one of our tables at no extra cost

## WiFi

We have '100 Club Guest' Wi-Fi for ticket holders as well as '100 Club Private' Wi-Fi for promoters. Both work well. The password for the private Wi-Fi is 'godsavethequeen'

## GUESTS

The 100 Club reserves the right to 20 guests to any event. This will not effect your capacity

## PRODUCTION OFFICE

You are welcome to use the venue office for production along with wifi

## EVENT LISTING

Once confirmed please email event listing to [ruby@the100club.co.uk](mailto:ruby@the100club.co.uk) including images, links & on sale date. All gigs will be posted on our website, monthly gig posters and mailouts. – Tag us on socials and we'll share -

## TICKETING

Promoters are welcome to use our We Got Tickets or DICE accounts. A booking fee is added to all ticket e prices. Ticket settlements will be transferred by BACs to your account one week after the event

## THE 100 CLUB ONLINE

[the100club.com](http://the100club.com)

[facebook.com/the100club](https://facebook.com/the100club)

[instagram.com/100clublondon](https://instagram.com/100clublondon)

# TECH SPEC

## TURBOSOUND

### TSE SYSTEM

6 x TSE 111 mid/top units  
2 x full range TMS 4  
(2 x TSE111 + 2 x TSE 118)  
2 x upgraded TSE 118 400 watt bass cabinets  
2 x THL 818 bass cabinets  
2 x CVA subs loaded with PD1850's  
BSS FDS360 Crossover  
XTA DP300 Speaker Management  
QSC RMX 2450 Power amp  
QSC PLX 2402 Power amp  
Yamaha P7000S Power amp  
Yamaha XP5000 Power amp  
System run 2-way  
Total power 5.2 kw

## MIDAS M32 LIVE MIXING

### CONSOLE

26 channels available from the stage  
With wireless tablet and wired PC control using Mixing Station or Midas software  
Multitrack recording available by request

## MONITORS

8 Separate Sends  
2 x RCF Event SM3000  
4 x Turbosound TMW-115  
2 x Turbosound TCS 15M  
1 x RCF Drum Fill  
2 x EV CP3000S Power amps  
2 x QSC K10.2 Active Monitors  
4 sends to stage for IEM use

## MICROPHONES

5 x sE V7  
3 x Shure SM58  
3 x Shure Beta58  
2 x Shure SM57  
1 x Shure Beta57  
1 x Shure Beta91a  
1 x Sennheiser e602  
1 x Sennheiser MD421  
1 x Electrovoice PL33  
2 x Audio Technica ATM450  
3 x Sennheiser e604  
2 x Sennheiser e906  
3 x sE V Beat  
1 x Shure PG81

## DI BOXES

2 x Radial J48 Stereo  
2 x Radial J48 Mono  
1 x Orchid Electronics Stereo  
1 x Samson Stereo  
2 x generic active DI boxes

## LIGHTING DESK

CHAMSYS MAGICQ

## HAZER

Look Solutions Unique 2.1

## DJ EQUIPMENT

2 x Pioneer CDJ1000 Mk3 CD decks  
2 x Technics SL-1210 Mk2 turntables  
1 x Pioneer DJM-800 Mixer

## EQUIPMENT HIRE

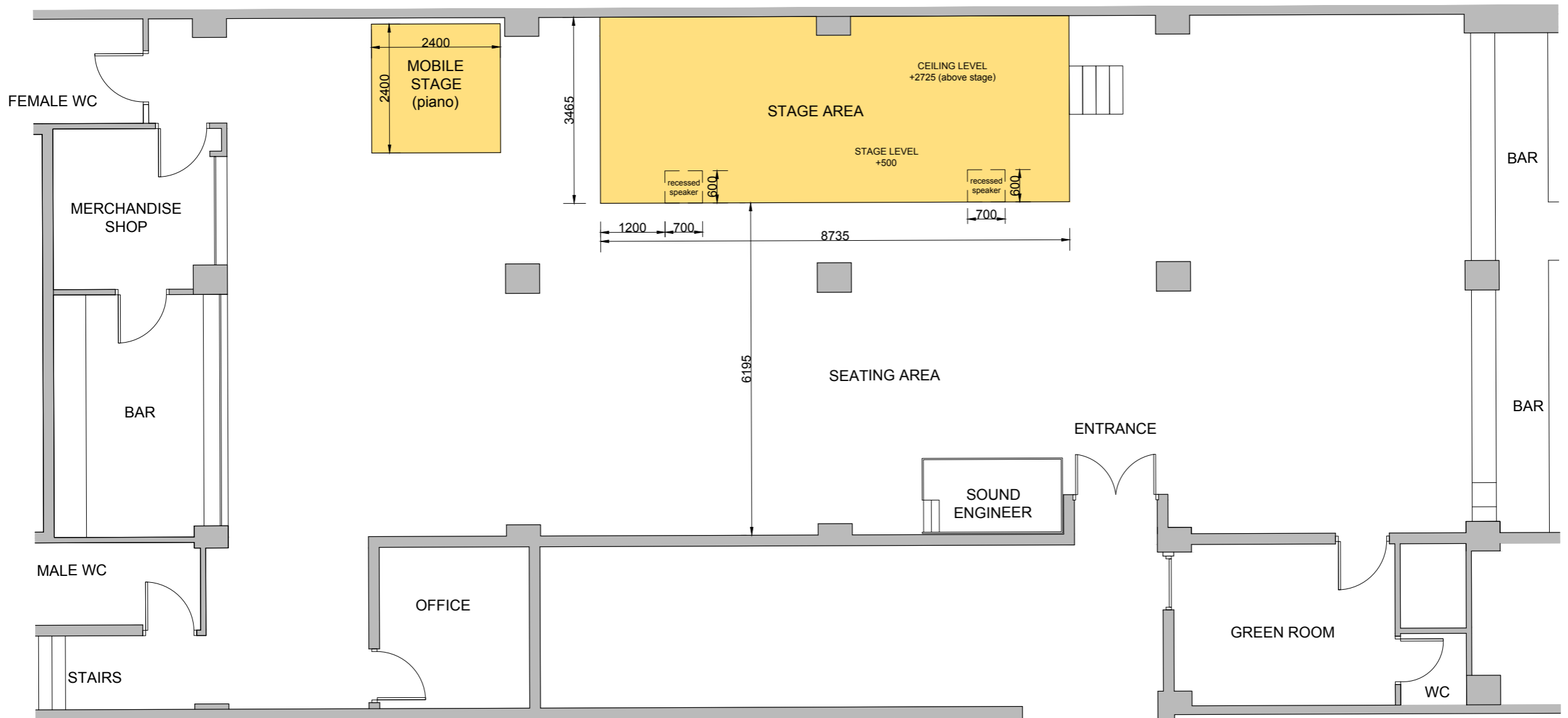
For extra equipment or backline we recommend John Henrys, FX Rental or Terminal.

## ADDITIONAL POWER

1 x 32amp/3 phase & 1 x 32amp/single phase stage left  
1 x 32amp/3 phase stage right

## NOT PERMITTED

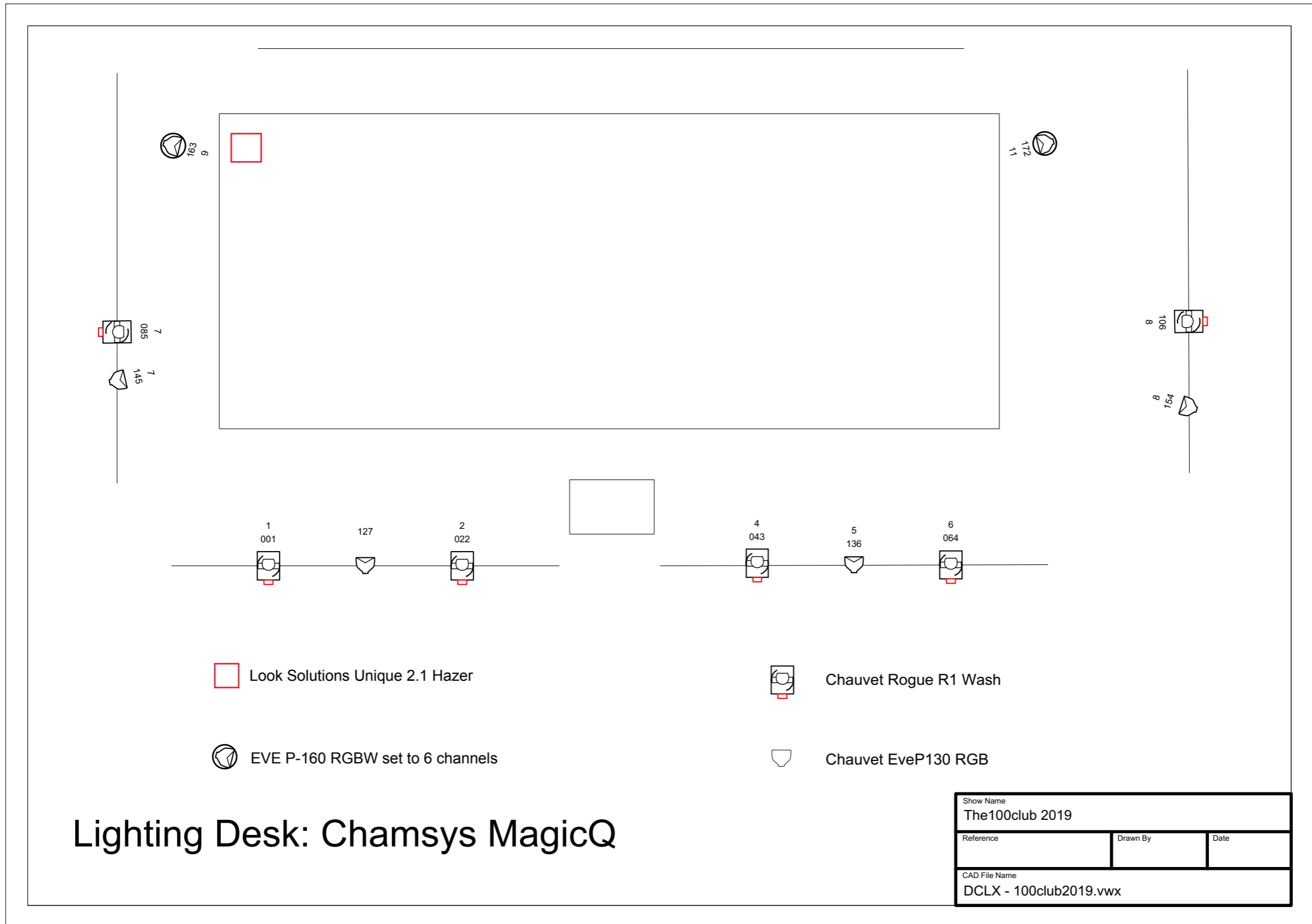
Smoke machine  
Pyrotechnics  
Confetti Canon TBD



**STAGE PLAN**

status  
client  
100 CLUB  
site  
100 NEW OXFORD STREET  
LONDON  
drawing  
-  
PLANS  
scale  
1:50 @ A1  
author  
ncw  
proj. no.  
N028  
draw. no.  
10-01  
scale  
APRIL 21  
revision  
A  
Nicholas C Williams RIBA  
ncwarchitecture@gmail.com

# LIGHTING PLOT



# PHOTOS





# PHOTOS - OUR HISTORY

